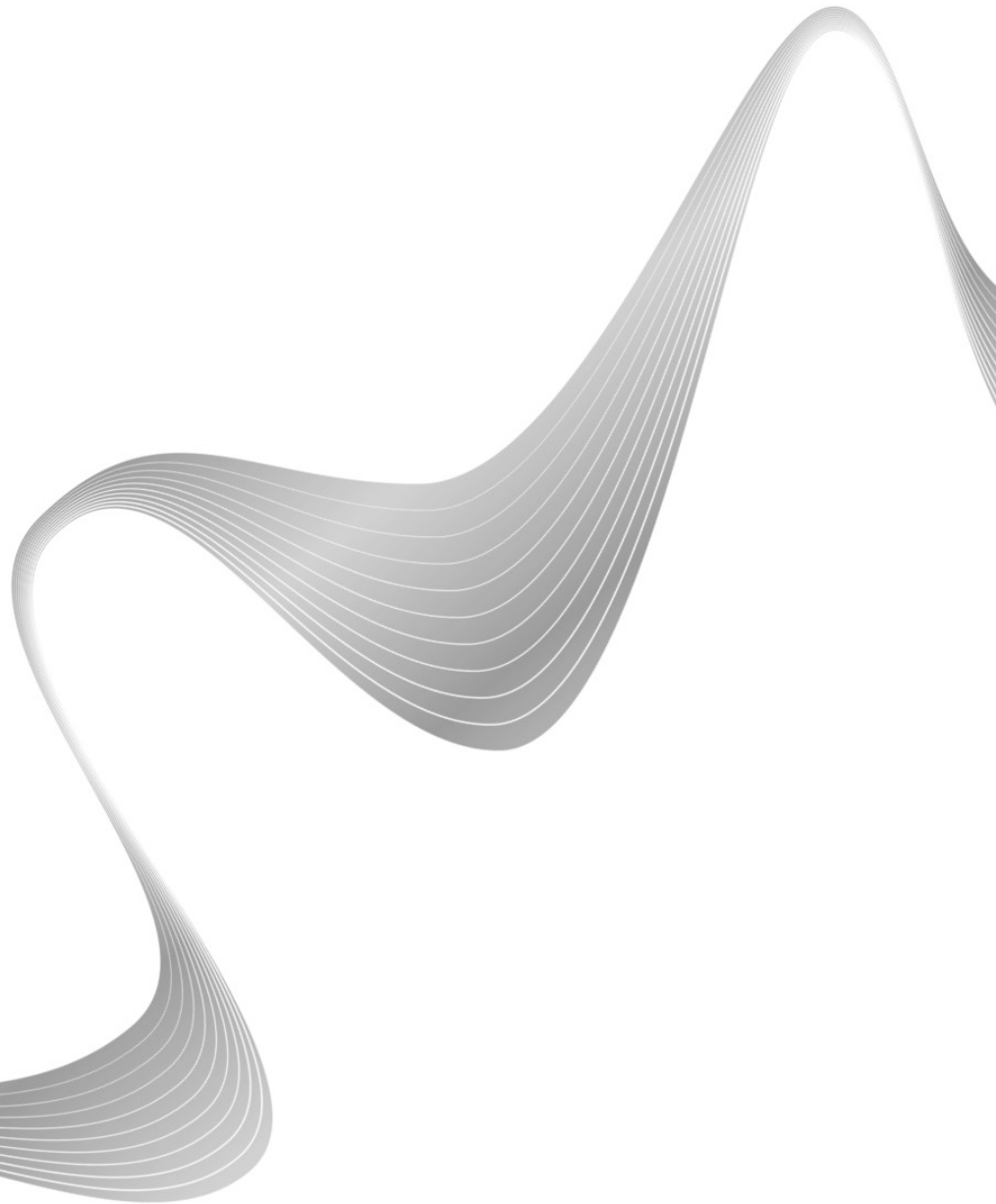


**nero**  
simply enjoy™



# **Manual**

## **Nero DiscCopy**

### Copyright and Trademark Information

*This document, like the software described therein, is provided as a license and may only be used or reproduced in accordance with the licensing agreement. The contents of this document, as well as the associated software, is subject to change without prior notice. Nero AG rejects any responsibility for the correctness of the contents of this document and rejects any claims that transcend the clauses of the guarantee agreement.*

*This document and all of its contents are protected by copyright and are the property of Nero AG. All rights reserved. In addition, this document contains material that is protected by internationally valid copyright. This document may not be reproduced, transmitted, or transcribed in whole or in part without the express written permission of Nero AG.*

*Please keep in mind that existing graphics, pictures, videos, music titles or other materials that you may wish to insert or transcribe into projects may be protected by copyright. The unauthorized use of this type of material in your projects may violate the rights of the owner of the copyright. Make sure that you obtain all necessary authorizations from the owner of the copyright.*

*Unless you own the copyright, have permission from the copyright owner or your actions fall under the "fair use" provisions of copyright law, you may be violating national or international copyright laws. The transcribing, duplication, modification or publication of copyright-protected material may lead to claims for damages and the enforcement of other legal measures against you. If you are unsure of your rights, you should contact your legal advisor.*

*Some Nero Suitenode:180143987699084911478 applications require technologies developed by third-party manufacturers and may be included in Nero Suitenode:180143987699084911478 as demo versions. These applications can be activated online free of charge or by sending an activation fax to have unlimited use of the version. Nero will only transmit the data necessary for activation of the technology licensed from third parties. For unlimited use of Nero Suitenode:180143987699084911478, it is therefore necessary to have an Internet connection or a fax machine.*

*Copyright © 2010 Nero AG and its licensors. All rights reserved.*

*Nero, Nero BackItUp, Nero BackItUp & Burn, Nero Burning ROM, Nero Digital, Nero DMA Manager, Nero Essentials, Nero Express, Nero ImageDrive, Nero LiquidTV, Nero MediaHome, Nero MediaHub, Nero MediaStreaming, Nero Move it, Nero Music2Go, Nero PhotoDesigner, Nero PhotoSnap, Nero Recode, Nero RescueAgent, Nero Simply Enjoy, Nero SmartDetect, Nero SmoothPlay, Nero StartSmart, Nero Surround, Nero Vision, Nero Vision Xtra, Burn-At-Once, InCD, LayerMagic, Liquid Media, the SecurDisc logo, and UltraBuffer are common law trademarks or registered trademarks of Nero AG.*

*Adobe, Acrobat, Acrobat Reader and Premiere are trademarks or registered trademarks of Adobe Systems, Incorporated. AMD Athlon, AMD Opteron, AMD Sempron, AMD Turion, ATI Catalyst and ATI Radeon are trademarks or registered trademarks of Advanced Micro Devices, Inc. ATSC is a trademark of the Advanced Television Committee. ICQ is a registered trademark of AOL, LLC. Apple, Apple TV, iTunes, iTunes Store, iPad, iPod, iPod touch, iPhone, iPhoto, FireWire, and Mac are trademarks or registered trademarks of Apple, Inc. ARM is a registered trademark of ARM, Ltd. AudibleReady is a registered trademark of Audible, Inc. BenQ is a trademark of the BenQ Corporation. Blu-ray Disc is a trademark of Blu-ray Disc Association. CyberLink is a registered trademark of CyberLink Corp. DLNA is a registered trademark of Digital Living Network Alliance. DivX and DivX Certified are registered trademarks of DivX, Inc. Dolby, Pro Logic and the double-D symbol are trademarks or registered trademarks of Dolby Laboratories, Inc. DTS and DTS Digital Surround are registered trademarks of DTS, Inc. DVB is a registered trademark of the DVB Project. Freescale is a trademark of Freescale Semiconductor, Inc. Google and YouTube are trademarks of Google, Inc. WinTV is a registered trademark of Hauppauge Computer Works, Inc. Intel, Intel XScale, Pentium and Core are trademarks or registered trademarks of Intel Corporation. Linux is a registered trademark of Linus Torvalds. Memorex is a registered trademark of Memorex Products, Inc. ActiveX, ActiveSync, DirectX, DirectShow, Internet Explorer, Microsoft, HDI, MSN, Outlook, Windows, Windows Mobile, Windows NT, Windows Server, Windows Vista, Windows Media, Xbox, Xbox 360, Silverlight and the Silverlight-Logo, the Windows Vista start button and the Windows logo are trademarks or registered trademarks of Microsoft Corporation. My Space is a trademark of MySpace, Inc. NVIDIA, GeForce and ForceWare are trademarks or registered trademarks of NVIDIA Corporation. Nokia is a registered trademark of Nokia Corporation. CompactFlash is a registered trademark of SanDisk Corporation. Sony, Memory Stick, PlayStation, PLAYSTATION and PSP are trademarks or registered trademarks of Sony Corporation. HDV is a trademark of Sony Corporation and Victor Company of Japan, Limited (JVC). UPnP is a registered trademark of the UPnP Implementers Corporation. LabelFlash is a registered trademark of Yamaha Corporation.*

*The trademarks mentioned here are named for information purposes only. All trade names and trademarks are the property of their respective owners.*

*Nero AG, Im Stoeckmaedle 18, D-76307 Karlsbad, Germany*

## Table of contents





1	Start Successfully	4
1.1	About the Manual	4
1.2	About Nero DiscCopy	4
1.3	Nero DiscCopy Versions	4
2	Nero DiscCopy	5
2.1	Displaying Nero DiscCopy	5
2.2	Settings	6
2.2.1	Defining settings	7
2.3	Copy and burn process	8
2.3.1	Copying and burning a disc	8
3	Technical Information	10
3.1	Operating Systems	10
3.2	Discs supported	10
<b>4</b>	<b>Glossary</b>	<b>11</b>
<b>5</b>	<b>Index</b>	<b>13</b>
6	Contact	14

# 1 Start Successfully

## 1.1 About the Manual

This manual is intended for all users who want to learn how to use Nero DiscCopy. It is process-based and explains how to achieve a specific objective on a step-by-step basis.

To make best use of this documentation, please note the following conventions:

	Indicates warnings, preconditions or instructions that have to be precisely followed.
	Indicates additional information or advice.
<b>1. Start ...</b>	The number at the beginning of a line indicates a prompt for action. Carry out these actions in the order specified.
	Indicates an intermediate result.
	Indicates a result.
<b>OK</b>	Indicates text passages or buttons that appear in the program interface. They are shown in boldface.
<b>(see...)</b>	Indicates references to other chapters. They are executed as links and are shown in red and underlined.
<b>[...]</b>	Indicates keyboard shortcuts for entering commands.

## 1.2 About Nero DiscCopy

Windows Vista features so-called gadgets which appear in the sidebar or on the desktop and are a quick and easy way of executing frequently required operations. Nero DiscCopy is one of these gadgets for Windows Vista, and allows you to easily copy and burn discs directly or store them as an image file .

## 1.3 Nero DiscCopy Versions

Nero DiscCopy is available with the full range of features in all versions of the Nero Suite.

## 2 Nero DiscCopy

On a computer running the Windows Vista operating system, Nero DiscCopy is automatically available in the sidebar following installation of the Nero Suite. It can be displayed using the **Gadgets** button.

### 2.1 Displaying Nero DiscCopy

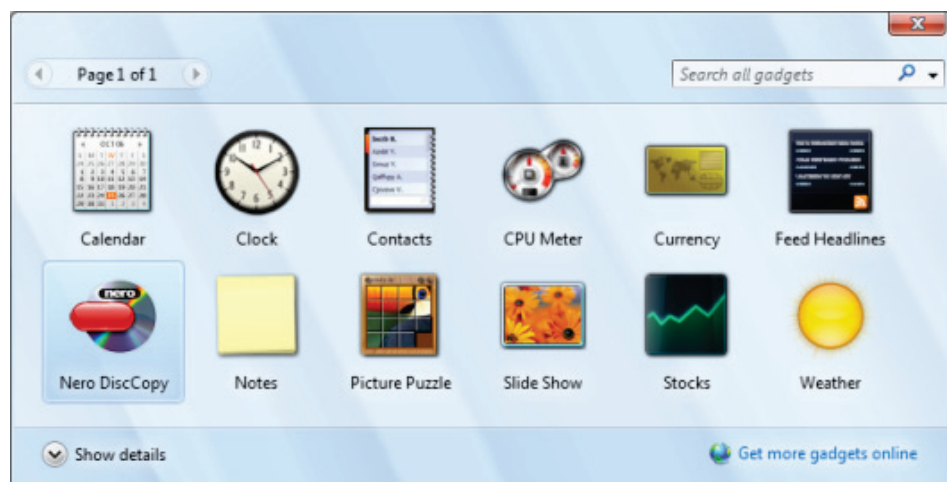
To display Nero DiscCopy in the sidebar of Windows Vista, proceed as follows:

1. Click on the + sign on the Gadgets button in the top right of the sidebar.



Gadgets button

2. A window showing all the gadgets is displayed.



Gadgets window

3. Click on the Nero DiscCopy icon and drag it to the sidebar or onto the desktop as you wish.

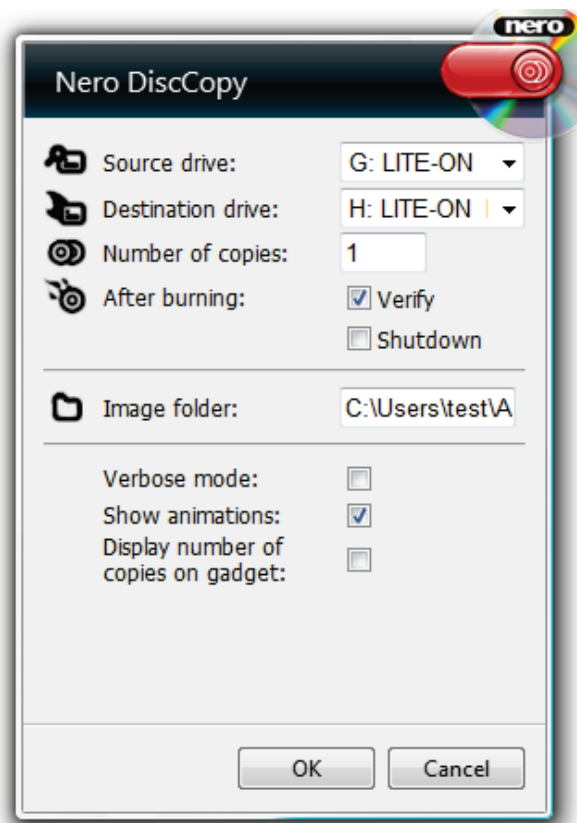


Nero DiscCopy icon

- The Nero DiscCopy gadget is then available. If you drag the icon to the sidebar you can access it whenever you need it.

## 2.2 Settings

In the Settings window you can define the source and destination drive, specify the number of copies to be burned, and define the actions to take place after the burn process. You can also select a number of display options and specify the folder where an image file is to be stored.



Settings window



The following input options are available in the settings window:

Drop-down menu <b>Source drive</b>	Automatically lists all connected disc drives and offers them for selection as the source drive.
Drop-down menu <b>Destination drive</b>	Automatically lists all connected recorders and offers them for selection as the destination drive.
Text box <b>Number of copies</b>	Defines how many copies of the source disc are to be created.
Area	Defines whether the data in the copy should be <b>verified</b> after burning

<b>After burning</b>	and/or whether the computer should be <b>shut down</b> after burning.
Text box <b>Image folder</b>	Defines the folder where an image file is to be stored.
Check box <b>Show all messages</b>	Defines whether fly-out windows should be displayed for all actions (check box selected) or only for error messages and questions directed at the user (check box cleared).
Check box <b>Show animation</b>	Enables/disables a small animation of the Nero DiscCopy icon to accompany the copy/burn process.
Check box <b>Display number of copies on gadget</b>	Defines that the number of copies to be created will be displayed on the Nero DiscCopy icon and can also be adjusted there with the help of arrow buttons.

### 2.2.1 Defining settings

To define the settings, proceed as follows:

1. Move the mouse pointer near the Nero DiscCopy icon.  
→ The  button bar is displayed.
2. Click the  button.  
→ The settings window is displayed.
3. Select the source drive you want in the **Source drive** drop-down menu.
4. Select the destination drive you want in the **Destination drive** drop-down menu.
5. Specify the number of copies you want in the **Number of copies** text box.
6. Check the **Verify** box if you want the data to be verified once burning is complete.
7. Check the **Shut down** box if you want the computer to be shut down once burning is complete.
8. If you do not have a recorder connected to your computer, in the **Image** file drop-down menu select the path and folder where you want to store the image file.
9. Check/uncheck the **Show all messages** box if you want to be notified with a fly-out window for every action/only for error messages and questions directed at the user.
10. Check/uncheck the **Show animation** box if a small animation of the Nero DiscCopy icon is to accompany the copy/burn process.
11. Check/uncheck the **Display number of copies on gadget** box if the number is to be displayed on the Nero DiscCopy icon and can be adjusted there.




Nero DiscCopy icon showing the number of copies

12. Click the **OK** button.

→ Your chosen settings are accepted and the Settings window is closed.

## 2.3 Copy and burn process


Using Nero DiscCopy you can either copy and burn discs directly to a blank disc or create an image file of a disc for burning later. The  button is used for this.

In its default setting, Nero DiscCopy will create only one copy of the source disc. Depending on the disc drives connected, the copy/burn process will proceed as follows:

- **There are at least two disc drives connected to the computer, at least one of these is a recorder.** The contents of the source disc in the source drive are burned directly "on-the-fly" to the destination disc in the recorder. If two to 99 copies are required, the contents of the source disc are temporarily stored on the hard drive and from there automatically burned to the destination discs in succession.
- **There is one recorder connected to the computer, but no other disc drive.** The contents of the source disc are read and temporarily stored on the hard drive. The source disc is ejected and a prompt to insert the blank disc displayed. As soon as this is inserted, the first copy is burned.
- **There is one disc drive without a recorder function connected to the computer.** The contents of the source disc are read and stored as an image file on the hard drive in the folder defined in the Settings window. . (see [Defining Settings→ 7](#))

### 2.3.1 Copying and burning a disc

To copy and burn a disc, proceed as follows:

1. Adjust the settings to your requirements if necessary (see [Defining Settings→ 7](#)).
2. Insert the source disc in the disc drive.
3. If there is a further drive with recorder function connected to your computer, insert the destination disc in this destination drive.
4. Click the  button.

→ The copy/burn process is started; a fly-out window keeps you informed of the progress.



Fly-out window for the copy/burn process

→ You have successfully copied and burned a disc.

## 3 Technical Information

### 3.1 Operating Systems

- Windows Vista

### 3.2 Discs supported

- All optical discs accepted by the connected recorders are suitable as source media. All optical discs accepted by the connected recorders are suitable as source media.
- All discs that correspond to the source medium are suitable as destination media.
- The following discs are supported in principle: CD-R, CD-RW, DVD-R(W), DVD+R(W), DVD-RAM, DVD+R DL9, DVD-R DL9, Blu-ray BD-R and BD-RE, HD-DVD, HD DVD-RW.

## 4 Glossary

### **BD-R**

The BD Recordable write-once data carrier is based on Blu-ray technology and can be obtained in single layer format with 23.3, 25, or 27 GB or in double layer format with 46.6, 50, or 54 GB.

### **BD-RE**

The BD-Rewritable data carrier is based on Blu-ray technology and can be obtained in single layer format with 23.3 or 25 GB or in double layer format with 46.6 or 50 GB. In comparison to the DVD-/+RW, the BD-RE can be re-written more times and provides increased data integrity.

### **CD-R**

Compact Disc-Recordable is a technology for write-once media. The Orange Book standard defines the storage of audio data and other computer-readable data.

### **CD-RW**

Compact Disc-ReWritable is a technology for rewritable media.

### **DVD+R DL9**

A DVD+Recordable is a rewritable media format. The double layer 9 variant has two layers and a storage capacity of 8.5 GB.

### **DVD+R(W)**

DVD+ReWritable is a format of rewritable media that was developed jointly by Dell, Hewlett-Packard, Mitsubishi Chemical, Philips, Ricoh, Sony, Thomson and Yamaha. It is fully and directly compatible with DVD players and DVD-ROM drives.

### **DVD-R DL9**

The double layer 9 variant has two layers and a storage capacity of 8.5 GB.

### **DVD-R(W)**

DVD+/-ReWritable is a rewritable media format. It is fully and directly compatible with DVD players and DVD-ROM drives.

### **DVD-RAM**

Digital Versatile Disc Random Access Memory is the first rewritable data carrier format developed. It is characterized by a distribution of sectors that makes it possible to achieve increased data integrity, quicker formatting, and improved error management in comparison to DVD+/-RW.

### HD DVD

High Density DVD is a disc format. Corresponding drives use a blue-violet laser in order to read and write data and can also play back conventional DVD's. . The shorter wavelength (405 nm) of this blue laser makes it possible to position the laser with greater accuracy. Data can be written in a more compact manner and takes up less space on the disc. An HD DVD can store up to 15 GB on a single layer disc and up to 30 GB on a dual layer disc. HD discs are available as HD DVD-R, HD DVD-RW and HD DVD-RAM.

### HD DVD-RW

High Density DVD is a rewritable disc format. Corresponding drives use a blue-violet laser in order to read and write data and can also play back conventional DVD's. The shorter wavelength (405 nm) of this blue laser makes it possible to position the laser with greater accuracy. Data can be written in a more compact manner and takes up less space on the disc. An HD DVD can store up to 15 GB on a single layer disc and up to 30 GB on a dual layer disc.

### Image

An image refers to a single file on the hard drive that contains the image of a complete disc. A disc image can be used to create exact copies on media at a later point in time if problems occur during the write process or if no recorder is connected to your PC. The image requires as much free space on the hard drive as the contents of the original disc take up.

## 5 Index

After burning.....	7
Conventions, manual .....	4
Copy/burn process.....	8
Copy/burn process .....	8
Destination drive .....	6
Discs supported .....	10
Display number of copies on gadget.....	6
Gadget .....	4, 5
Image File .....	4, 7, 7, 8
Image folder .....	7
Manual, conventions .....	4
Nero DiscCopy	
Copy/burn process.....	8
Display .....	5
Number of copies .....	6
Operating system.....	10
Settings .....	7
Define .....	7
Destination drive .....	6
Display number of copies on gadget .....	6
Image folder .....	7
Number of copies.....	6
Settings window .....	7
Show animation .....	7
Source drive.....	6, 6
Settings window .....	7
Settings.After burning .....	7
Show animation.....	7
Versions .....	4

## 6 Contact

Nero DiscCopy is a Nero AG product.

### Nero AG

Im Stoeckmaedle 13-15  
76307 Karlsbad  
Germany

**Internet:** [www.nero.com](http://www.nero.com)  
**Help:** <http://support.nero.com>  
**Fax:** +49 724 892 8499

### Nero Inc.

330 N Brand Blvd Suite 800  
Glendale, CA 91203-2335  
USA

**Internet:** [www.nero.com](http://www.nero.com)  
**Help:** <http://support.nero.com>  
**Fax:** (818) 956 7094  
**E-mail:** [US-CustomerSupport@nero.com](mailto:US-CustomerSupport@nero.com)

### Nero KK

Rover Center-kita 8F-B, 1-2-2  
Nakagawa-chuou Tsuzuki-ku  
Yokohama, Kanagawa  
Japan 224-0003

**Internet:** [www.nero.com](http://www.nero.com)  
**Help:** <http://support.nero.com>

Copyright © 2010 Nero AG and its licensors. All rights reserved.