



nero



Copyright and Trademark Information

This document and all its contents herein are subject to and protected by international copyright and other intellectual property rights and are the property of Nero AG and its subsidiaries, affiliates or licensors. All rights reserved. No part of this document may be reproduced, transmitted or transcribed without the express written permission of Nero AG. All trade names and trademarks and/or service marks are the property of their respective owners. The trademarks mentioned are expressly named for information purposes only. Nero AG rejects any claims that transcend the clauses of the guarantee rights to the fullest extent. Nero AG does not undertake any liability for the correctness of the content of this document. The contents of the software supplied, as well as of this document, may be changed without prior warning. Some applications of the Nero Suites require technologies developed by third-party manufacturers. These technologies need to be activated online (free of charge) or by sending an activation fax to have unlimited use of the respective functionality. Nero will then undertake to release the data necessary to activate technologies licensed by third-party manufacturers for use with the product. It is therefore necessary to have an Internet connection or a fax machine.

Unless you own the copyright or have permission from the copyright owner, you may be violating national or international copyright laws and be subject to payment of damages and other remedies, if you duplicate, reproduce, modify, or distribute copyrighted material. If you are unsure of your rights you should contact your legal advisor.

Copyright © 2014 Nero AG and its licensors. All rights reserved.

Nero, Nero BackItUp, Nero Digital, Nero Simply Enjoy, Nero SmoothPlay, Nero StartSmart, Nero Surround, Burn-At-Once, LayerMagic, Liquid Media, SecurDisc, the SecurDisc Logo, Superresolution, UltraBuffer, Nero Burning ROM, Nero Express, Nero BurnRights, Nero ControlCenter, Nero CoverDesigner, Nero Blu-ray Player, Nero WaveEditor, Nero SoundTrax, Nero BurnRights, Nero SoundTrax, Nero BackItUp, Nero Video, Nero Recode, SecurDisc Viewer, Nero RescueAgent, Nero AirBurn, Nero MediaHome Receiver, Nero Disc to Device, Nero MediaBrowser, Nero MediaHome, NeroKwik, Nero MediaHome WiFi Sync, Nero MediaHomeUnlimited, Nero MediaHome Burning, Nero MediaHome Playback, Nero MediaHome DVD Pack, Nero MediaHome Sync, Nero MediaHome Streaming, Nero MediaHome HD Burn, Nero MediaHome Faces, Nero MediaHome Play to TV and Nero Themes are common law trademarks or registered trademarks of Nero AG.

Portions of the Software utilize Microsoft Windows Media Technologies. Copyright © 1999-2002. Microsoft Corporation. All Rights Reserved.

This product contains portions of imaging code owned by Pegasus Software LLC, Tampa, FL.

Gracenote, CDDB, MusicID, MediaVOCS, the Gracenote logo and logotype, and the "Powered by Gracenote" logo are either registered trademarks or trademarks of Gracenote in the United States and/or other countries.

Manufactured under license from Dolby Laboratories. Dolby, Pro Logic, and the double-D symbol are registered trademarks of Dolby Laboratories, Inc. Confidential unpublished works. Copyright 2011 Dolby Laboratories. All rights reserved.

AVCHD and AVCHD logo, AVCHD Lite and AVCHD Lite logo are trademarks of Panasonic Corporation and Sony Corporation.

Facebook is a registered trademark of Facebook, Inc.

Yahoo! and Flickr are registered trademarks of Yahoo! Inc.

My Space is a trademark of MySpace, Inc.,

Google, Android and YouTube are trademarks of Google, Inc.

The Android robot is reproduced or modified from work created and shared by Google and used according to terms described in the Creative Commons 3.0 Attribution License.

Apple, Apple TV, iTunes, iTunes Store, iPad, iPod, iPod touch, iPhone, Mac and QuickTime are trademarks of Apple Inc. registered in the U.S and other countries.

IOS is a trademark or registered trademark of Cisco in the U.S. and is used by Apple under license.

Blu-ray Disc, Blu-ray, Blu-ray 3D, BD-Live, BONUSVIEW, BDXL, AVCREC and the logos are trademarks of the Blu-ray Disc Association.

DVD Logo is a trademark of Format/Logo Licensing Corp. registered in the U.S., Japan and other countries.

Bluetooth is a trademark owned by Bluetooth SIG, Inc.

The USB logo is a trademark of Universal Serial Bus Implementers Corporation.

ActiveX, ActiveSync, Aero, Authenticode, Bing, DirectX, DirectShow, Internet Explorer, Microsoft, MSN, Outlook, Windows, Windows Mail, Windows Media, Windows Media Player, Windows Mobile, Windows.NET, Windows Server, Windows Vista, Windows XP, Windows 7, Xbox, Xbox 360, PowerPoint, Silverlight, the Silverlight logo, Visual C++, the Windows Vista start button, and the Windows logo are trademarks or registered trademarks of Microsoft Corporation in the United States and other countries.

FaceVACS and Cognitec are either registered trademarks or trademarks of Cognitec Systems GmbH.

DivX and DivX Certified are registered trademarks of DivX, Inc.

DVB is a registered trademark of the DVB Project.

NVIDIA, GeForce, ForceWare, and CUDA are trademarks or registered trademarks of NVIDIA.

Sony, Memory Stick, PlayStation, and PSP are trademarks or registered trademarks of Sony Corporation.

HDV is a trademark of Sony Corporation and Victor Company of Japan, Limited (JVC).

3GPP is a trademark of European Telecommunications Standards Institute (ETSI)

Adobe, Acrobat, Reader, Premiere, AIR, and Flash are trademarks or registered trademarks of Adobe Systems, Incorporated.

AMD Athlon, AMD Opteron, AMD Sempron, AMD Turion, ATI Catalyst, ATI Radeon, ATI, Remote Wonder, and TV Wonder are trademarks or registered trademarks of Advanced Micro Devices, Inc.

Linux is a registered trademark of Linus Torvalds.

CompactFlash is a registered trademark of SanDisk Corporation

UPnP is a registered trademark of UPnP Implementers Corporation.

Ask and Ask.com are registered trademarks of IAC Search & Media.

IEEE is a registered trademark of The Institute of Electrical and Electronics Engineers, Inc.

Philips is a registered trademark of Koninklijke Philips Electronics.N.V.

InstallShield is a registered trademark of Macrovision Corporation.

Unicode is a registered trademark of Unicode, Inc.

Check Point is a registered trademark of Check Point Software Technologies Ltd.

Labelflash is a trademark of Yamaha Corporation

LightScribe is a registered trademark of the Hewlett-Packard Development Company, L.P.

Intel, Intel Media SDK, Intel Core, Intel XScale and Pentium are trademarks or registered trademarks of Intel Corporation in the U.S. and/or other countries.

MP3 SURROUND, MP3PRO and their logos are trademarks of Thomson S.A.

This product is furnished under U.S. and foreign patents owned and licensed by AT&T Corp.

Other product and brand names may be trademarks of their respective owners and do not imply affiliation with, sponsorship, or endorsement by owners. Other product and brand names may be trademarks of their respective owners and do not imply affiliation with, sponsorship, or endorsement by owners.

Nero AG reserves the right to change specifications without notice. Use of this product is subject to the acceptance of the End User License Agreement upon installation of the software. www.nero.com

Nero AG, Rueppurrer Str. 1a, 76137 Karlsruhe, Germany.

Copyright © 2014 Nero AG and its licensors. All rights reserved.

Table of Contents





1	Start Successfully	5
1.1	About the Manual	5
1.2	About Nero RescueAgent	5
1.3	Working with Nero RescueAgent	6
1.4	System Requirements	6
1.5	Starting the Program	6
2	Start Screen	8
2.1	Select Storage Media And Scan Level	9
3	Files Found Screen	10
3.1	Select Specific Files / Show Only Specific Files Window	11
3.2	Select Files to Recover	13
4	Process Completed Screen	15
4.1	Save Log File	16
5	End Screen	17
6	Technical Information	18
6.1	Supported File Systems	18
6.2	Key Combinations	18
6.3	Versions of Nero RescueAgent	19
7	Glossary	20
8	Index	21
9	Contact	22

1 Start Successfully

1.1 About the Manual

This manual is intended for all users who want to learn how to use Nero RescueAgent. It is process-based and explains how to achieve a specific objective on a step-by-step basis.

To make best use of this documentation, please note the following conventions:

	Indicates warnings, preconditions or instructions that have to be precisely followed.
	Indicates additional information or advice.
1. Start ...	The number at the beginning of a line indicates a prompt for action. Carry out these actions in the order specified.
	Indicates an intermediate result.
	Indicates a result.
OK	Indicates text passages or buttons that appear in the program interface. They are shown in boldface.
(see...)	Indicates references to other chapters. They are executed as links and are shown in red and underlined.
[...]	Indicates keyboard shortcuts for entering commands.

1.2 About Nero RescueAgent

With Nero RescueAgent you can quickly and easily recover files from storage media which, for instance, have been corrupted by scratches or cannot be read correctly due to ageing.

The following storage media are supported by Nero RescueAgent.

- CD
- DVD
- Hard drive
- USB stick
- Memory card
- Floppy

For [multisession disks](#) and disks formatted for the [UDF](#) file system capable of [packet writing](#), Nero RescueAgent also provides the option of recovering deleted files and older file versions.

1.3 Working with Nero RescueAgent

The Nero RescueAgent Assistant helps you to restore files in just a few steps. The following individual steps are necessary.

- Select storage medium and scan level.
- Search storage medium for files that can be restored.
- Select files to be restored and define storage location for files.
- Start **Restore**.
- Save log file. (optional)

Then you can either start a new scan, scan the storage medium again, restore files or end Nero RescueAgent.

See also


-  [Select Storage Media And Scan Level →9](#)
-  [Select Files to Recover →13](#)
-  [Save Log File →16](#)

1.4 System Requirements


Nero RescueAgent is part of the Nero product you have installed. Its system requirements are the same. Detailed system requirements of this and all other Nero products can be found in the Support section on our Web site www.nero.com.


1.5 Starting the Program

There are several ways to open Nero RescueAgent, depending on various factors such as the product you have installed and the operating system you are using.

- On Windows 7 and earlier versions of Windows, you can start Nero RescueAgent via:
 - **Start** (the start icon) > **(All) Programs** > **Nero** > **Nero 2015** > Nero RescueAgent
 - the  Nero 2015 desktop icon

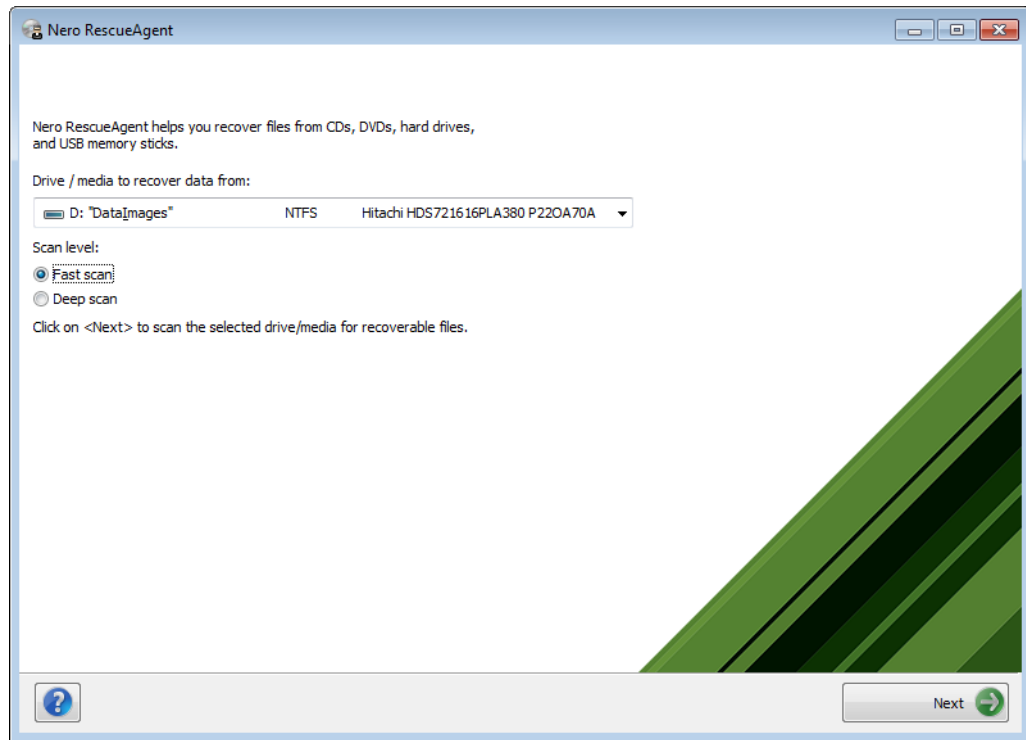


The application launcher  Nero 2015 provides easy access to Nero applications, offers information about the main use cases, and links to tutorials and other interesting Web sites by Nero.

- On Windows 8, you can start Nero RescueAgent via:
- the Nero 2015 tile (Windows 8 **Start** screen) or the  Nero 2015 desktop icon (Windows 8 desktop) if you use Nero 2015

2 Start Screen

In the start screen of Nero RescueAgent, you can select the storage medium from which to restore data. In addition you can choose between a fast and a deep scan.



Start screen

The following setting options are available:

Drop-down menu Drive/media to recover data from	Selects the storage medium from which data is to be restored.
Option button Fast scan	Selects the faster scan. With the aid of the fast scans, deleted files and older file versions are found.
Option button Deep scan	Selects the deep scan. The deep scan searches the whole storage medium. With the deep scan you will find individual faulty meta-file entries, corrupted files, unreadable sectors as well as files that have been deleted and that are no longer visible in the FAT file system. The deep scan takes much longer than the fast scan.
Button Help	Opens the Help window and displays information on program and version number.

Button <p style="text-align: center;">Next</p>	Starts the search for files that can be recovered.
--	--

2.1 Select Storage Media And Scan Level

To select the storage medium and the scan level, proceed as follows:

1. Insert the desired disc into the drive or connect the desired storage medium to your computer.
2. Select the storage media from the **Drive / media to recover data from** drop-down menu.
3. Select the desired scan level.



The fast scan only searches the **FAT** file system of the storage medium. The fast scan finds deleted files and older file versions.

The deep scan searches the whole storage medium. With the deep scan you can find individual faulty meta-file entries, corrupted files, unreadable sectors as well as files that have been deleted and which are not visible in the FAT file system.

The deep scan takes much longer than the fast scan.

4. Click the **Next** button.

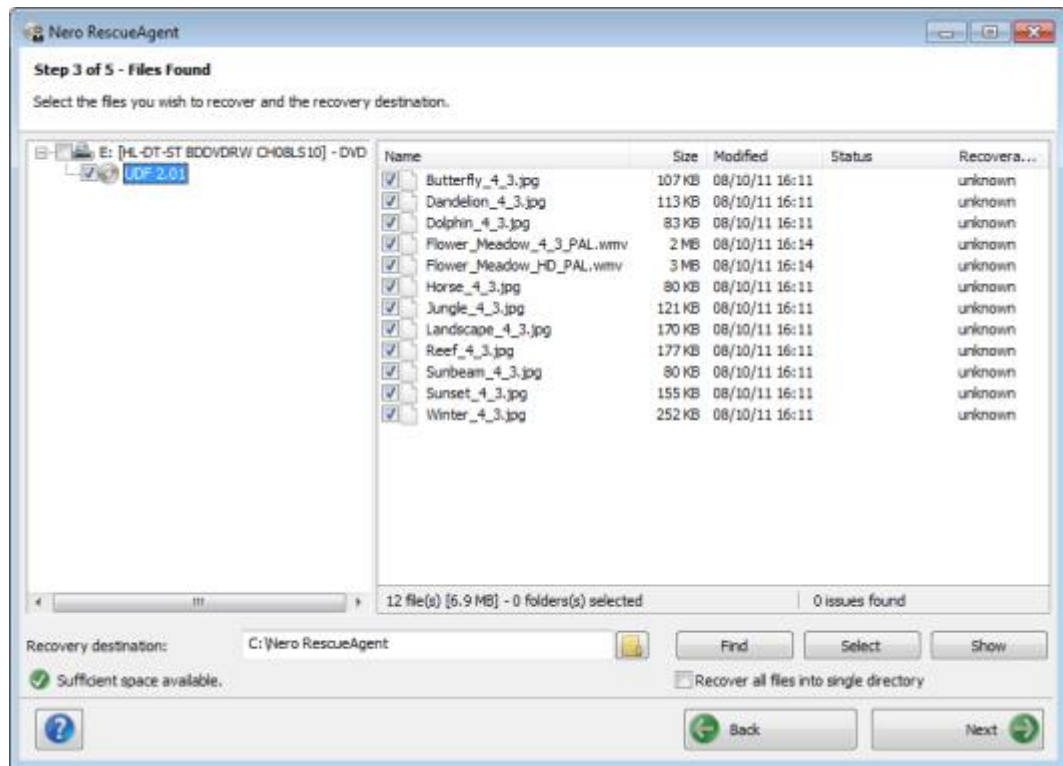
➔ The **Fast Scanning** or **Deep Scanning** screen is displayed. Progress can be followed here. After completion of the search, the **Files Found** screen is displayed.

See also

-  [Select Files to Recover →13](#)
-  [Start Screen →8](#)

3 Files Found Screen


The **Files Found** screen lists all files that can be restored. If files can only to be partly restored, they are marked in yellow. If there is only a small probability that files can be restored, they are marked in red.



Files Found screen

The following setting options are available:

Button	Find	Opens the Find file window which allows you to search for a specific file via its file name.
Button	Select	Opens the Select specific files window. Here files can be selected according to particular criteria and problem categories can be chosen for restoring.
Button	Show	Opens the Show only specific files window. Here files can be selected according to particular criteria and problem categories can be chosen for restoring.

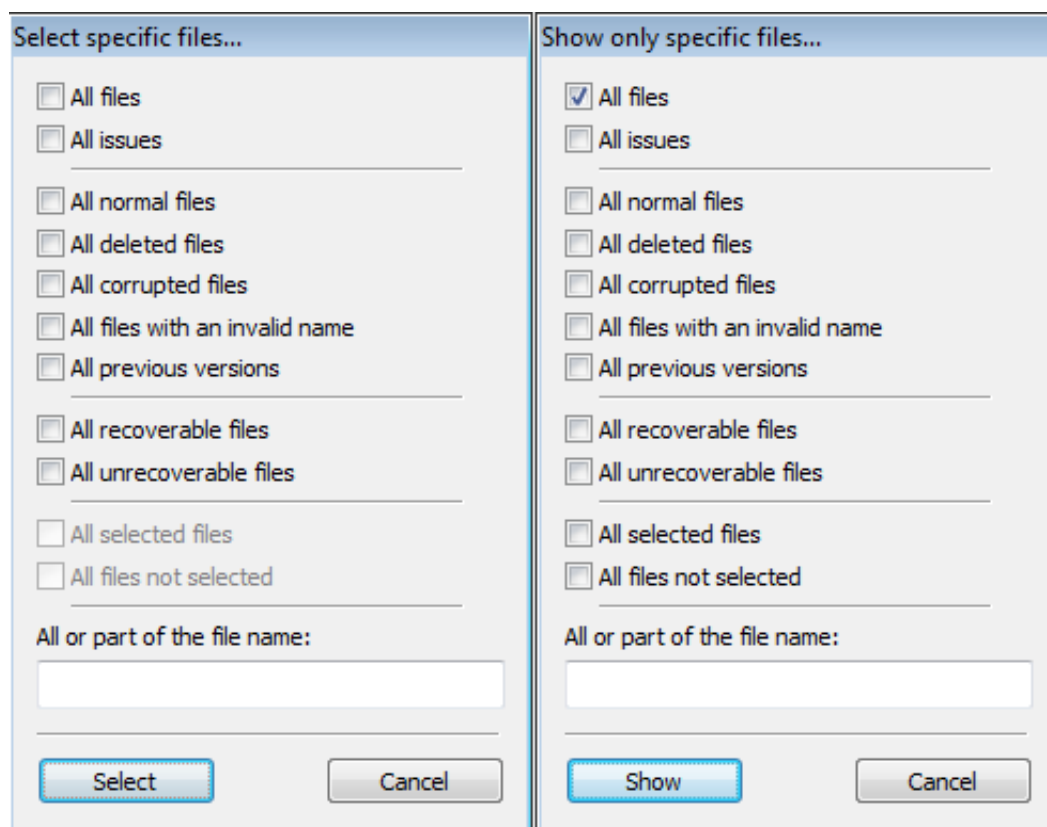
Button 	Opens the Browse For Folder window. Here you can define the folder in which the restored files are to be saved.
Check box Recover all files into single directory	Recovers all files into the directory you have defined in the Browse For Folder window.
Button Back	Returns to the start screen.
Button Next	Starts the recovery of the selected files. Only available when a storage locality for the files to be restored has already been defined.

See also

 [Select Files to Recover →13](#)

3.1 Select Specific Files / Show Only Specific Files Window

In the **Select specific files** and **Show only specific files** windows, files can be selected and displayed in the **Files Found** screen. The files can be selected according to particular criteria and also problem categories, whereby an easy overview is obtained, even for long lists.



Select specific files and Show only specific files window

The following setting options are available:

Check Box All files	Selects all files or shows them
Check Box All problems	Selects all files from all problem categories or shows them.
Check Box All normal files	Selects all files or shows files in which no faults have been found.
Check Box All deleted files	Selects all deleted files or shows them.
Check Box All corrupted files	Selects all corrupted files or shows them. Nero RescueAgent finds corrupted files only when the Deep Scan option has been selected in the start screen.
Check Box All files with incorrect file names	Selects all files with incorrect file names or shows them. Nero RescueAgent finds files with incorrect names only if the Deep Scan option has been selected in the starting screen.

Check Box All previous versions	Selects all older file versions or shows them.
Check Box All recoverable files	Selects all files that can be restored or shows them.
Check Box All unrecoverable files	Selects all files that cannot be restored or shows them.
Check Box All selected files	Shows all selected files Only available in Show only specific files window.
Check Box All files not selected	Shows all files that have not been selected. Only available in Show only specific files window.
Input field All or part of the file name:	Enter a search term here which is to be searched for in the listed files in the Files Found screen. All files that contain the search term are listed or shown.
Button Select	Closes the Select specific files window and marks all the selected criteria and problem categories in the Files Found screen.
Button Show	Closes the Show only specific files window and shows all the selected criteria and problem categories in the Files Found screen.
Button Cancel	Closes the Select specific files or the Show only specific files window.

3.2 Select Files to Recover


The **Files Found** screen lists all files and folders that can be restored. As the list can be very long, it is possible to show files according to certain criteria and problem categories. The files can also be selected from the folder tree.


The following requirements must be fulfilled:

- ▲ You have searched the desired storage medium for files to be restored.
- ▲ The **Files Found** screen is displayed.




To find and select files according to specific criteria and problem categories, proceed as follows:

1. If you want to find a certain file via its file name:
 1. Click the **Find** button.
 - ➔ The **Find file** window is opened.
 2. Enter the full file name or a part of it in the **File name** input field.

3. If you want Nero RescueAgent to search for the file name as a separate word, select the **Match whole word** check box.
4. If you want Nero RescueAgent to respect the spelling (upper case or lower case) of the file name, select the **Match case** check box.
5. If you want Nero RescueAgent to select the found file, select the **Select found file** check box.
6. Click the **Find** button.
 - ➔ If a file matching your search criteria is found, it is highlighted in the list of files of the **Files Found** screen.
7. Click the Close button.
 - ➔ The window is closed.
2. If you want to select specific files:
 1. Click the **Select** button.
 - ➔ The **Select specific files** window is opened.
 2. Select the check box of the desired criteria or enter a search term in the **All or part of the file name** input field and click the **Select** button.
 - ➔ The **Select specific files** window is closed. The **Select** button is now highlighted.
3. If you want only specific files to be shown:
 1. Click the **Show** button.
 - ➔ The **Show only specific files** window is opened.
 2. Select the check boxes of the criteria and problem categories or enter a search term in the **All or part of a file name** input field and click the **Show** button.
 - ➔ The **Show only specific files** window is closed. The **Show** button is now highlighted.
4. Click the  button in order to define the target folder of the files to be restored.
 - ➔ The **Browse For Folder** window is opened.

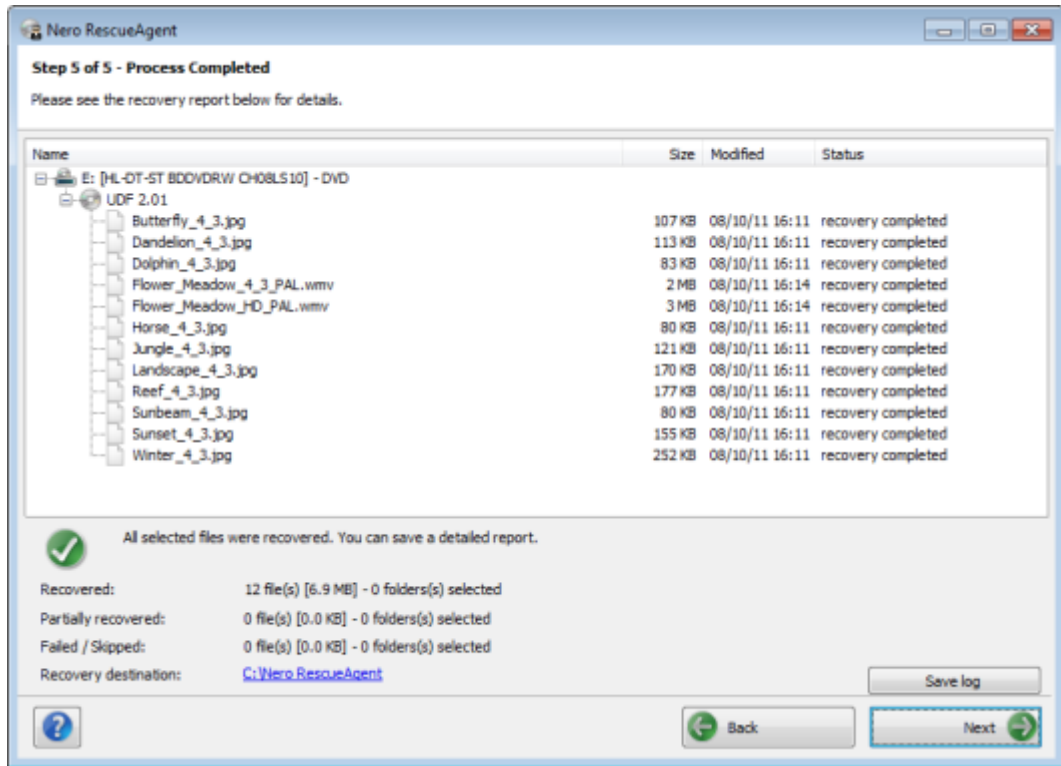
 The folder in which the files are to be stored must not be situated on the same storage medium from which the files are to be restored.
5. Select the folder in which the files are to be stored and click the **OK** button.
 - ➔ The **Browse For Folder** window is closed.
6. Click the **Next** button.
 - ➔ Nero RescueAgent begins restoring the selected files. This can take some time depending on how severely the storage medium is damaged. After recovery is complete, the **Process Completed** screen is displayed.

See also

-  [Save Log File](#) →16
-  [Files Found Screen](#) →10
-  [Select Specific Files / Show Only Specific Files Window](#) →11

4 Process Completed Screen

All recovered files are displayed in the **Process Completed** screen. The screen also indicates how many files could not be recovered. You can save a log file as a summary of the recovery performed.



Process Completed Screen

The following setting options are available:

<p>Button</p> <p style="text-align: center;">Save log file</p>	<p>The Save as dialog appears. You can specify the storage location for the log file here. The log file is saved in TXT format.</p>
<p>Link</p> <p style="text-align: center;">Recovery destination</p>	<p>Opens the folder in which the restored files were saved.</p>
<p>Context Menu</p> <p style="text-align: center;">Explore this folder</p>	<p>Opens the folder in which the marked file was saved in Windows Explorer.</p>
<p>Button</p> <p style="text-align: center;">Back</p>	<p>Returns to the Recovering screen.</p>

Button <p style="text-align: center;">Next</p>	Changes to the end screen of Nero RescueAgent.
--	--

4.1 Save Log File

The following requirements must be fulfilled:

- ▲ You have restored files with Nero RescueAgent.
- ▲ The **Process Completed** screen is displayed.

To save a log file, proceed as follows:

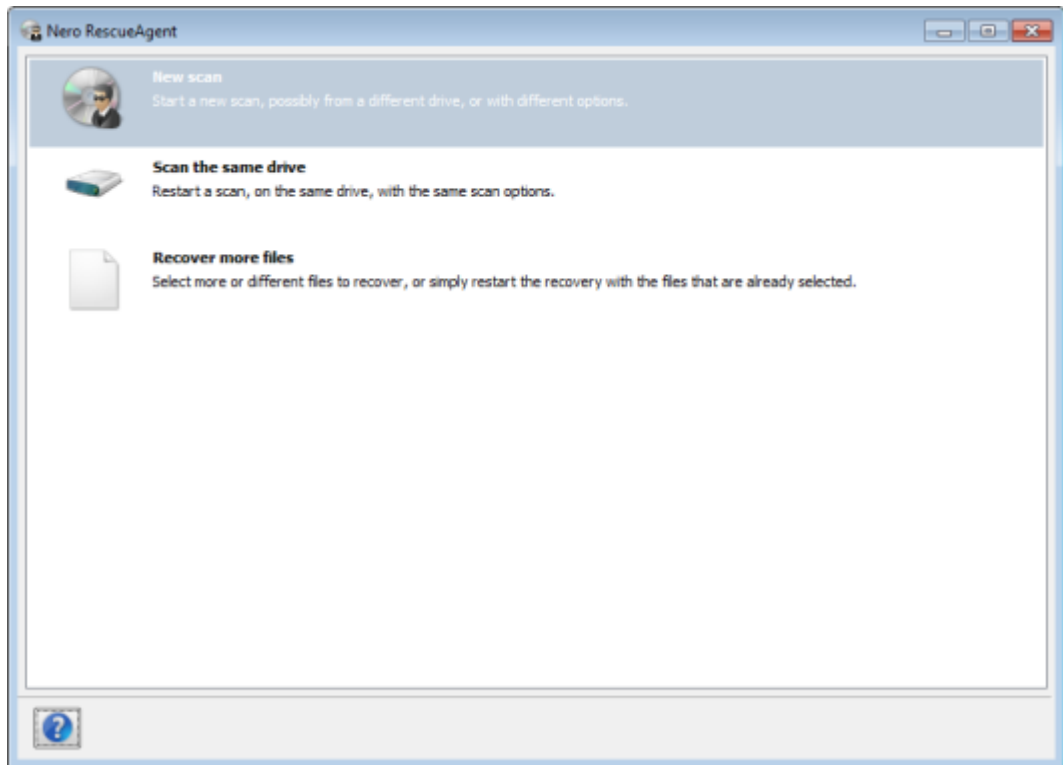
1. Click the **Save log file** button.
 - ➔ The **Save As** window is opened.
2. Select the folder to which the log file is to be saved and click the **OK** button.
 - ➔ The **Save As** dialog is closed.
3. Click the **Next** button.
 - ➔ The end screen of Nero RescueAgent is displayed. You can now either start a new scan, scan the same storage medium again, restore further files, or close Nero RescueAgent.

See also

- 📖 [Process Completed Screen](#) →15

5 End Screen

In the end screen you can either start a new scan, scan the same storage medium again, or restore further files.



End screen

The following menu icons are available:

New scan	Returns to the start screen.
Scan the same drive	Restarts a scan on the same drive with the same scan options.
Recover more files	Changes to the Files Found screen. Here you can select further files to restore, or simply restart restoring with the files that are already selected.

6 Technical Information

6.1 Supported File Systems

- UDF (Version 1.0 to 2.6)
- CDFS ([ISO 9660](#), including [Joliet](#)).
- [Multisession Disc](#)
- UDF/ISO [Bridge Disc](#)
- [NTFS](#)
- [FAT](#) 16, FAT 32, ExtFAT

6.2 Key Combinations

In Nero RescueAgent menu commands can be carried out on-the-fly via predefined key combinations.

The following key combinations are available:

[Ctrl+B]	Returns to the previous screen.
[Ctrl+R]	Starts recovery. Only available in the Files to Recover screen.
[Ctrl+S]	Starts the search for files on the selected storage medium. Only available on the starting screen.
[Ctrl+C]	Aborts restoring of the files. Only available in the Files Are Being Recovered screen.
[Ctrl+A]	Selects all files from the disk. Only available in the Files to Recover screen.
[Ctrl+P]	Selects all files for which problems have been determined and restoring is required. Only available in the Files to Recover screen.

[Ctrl+D]	Opens the Find Folder window. Only available in the Files to Recover screen.
[Ctrl+L]	The Save as window appears. Here you can store a log file and specify the storage location. Only available in the Recovery completed screen.
Ctrl+Pos 1	Returns to the start screen. Only available in the Recovery completed screen.
Alt+Plus button	Expands all entries in the folder tree starting from the selected entry or from the root if no entry is selected. Only available in the Files to Recover screen.
Alt+Minus button	Hides all entries in the folder tree starting from the selected entry or from the root if no entry is selected. Only available in the Files to Recover screen.
Esc	Closes Nero RescueAgent.

6.3 Versions of Nero RescueAgent

Nero RescueAgent is available in versions with different features. In addition to the full Nero RescueAgent version, there are other versions with restricted features.

Nero RescueAgent Essentials and trial versions of Nero RescueAgent have the following restriction:

- Files to be recovered are limited to five per session

7 Glossary

Bridge Disc

A Bridge Disc is a variant of a CD-ROM that can be read from CD drives but also from CD-I devices such as a Photo CD for example. It is defined in the White Book Standard and contains extra information in an XA (Standard Architecture) track on the CD-ROM.

FAT

FAT (File Allocation Table) is a file system developed by Microsoft. The FAT 12, FAT 16 and FAT 32 file systems are used on all types of mobile storage media (e.g. USB sticks, memory cards).

ISO 9660

The International Organization for Standardization defined the Universal Standard 9660 which determines the features of the CD. This format is platform-independent and can thus be read by computers with different operating systems. In order to ensure universal readability, the file names used should be as short as possible. (In a DOS environment no more than eight characters may be used).

Joliet

Joliet refers to an extension of the ISO-9660 standard for file names. Joliet was designed by Microsoft in order to represent more characters. The file name can be up to 64 characters long and contain the letters A-Z, a-z, umlauts, as well as characters from Chinese, Japanese, and Korean.

Multisession Disc

A multisession disc can contain several sessions that are not fixed. This way, more data can be added in new sessions at a later point in time, and the disc is not closed until it is full.

NTFS

New Technology File System is a Windows® file system. Its advantages include differentiated access and rights management, as well as defragmented data storage, which allows the processing speed to remain high.

Packet-writing

Packet-writing refers to a procedure for writing to optical media incrementally. An optical medium, e.g. a DVD, can be used as a hard drive as a result. This way, files can be copied, moved, changed, or erased on the respective optical medium.

UDF

The Universal Disc Format is a platform-independent file system. File names can be up to 255 characters long; 8 and 16 bit character sets are supported.

8 Index

Find file.....	13
Key Combinations	
[Ctrl+A].....	18, 18
[Ctrl+B].....	18, 18
[Ctrl+C].....	18, 18
[Ctrl+D].....	19, 19
[Ctrl+L].....	19, 19
[Ctrl+P].....	18, 18
[Ctrl+R].....	18, 18
[Ctrl+S].....	18, 18
Alt+Minus button.....	19, 19
Alt+Plus button.....	19, 19
Ctrl+Pos 1.....	19, 19
Esc.....	19, 19
Log File	
Location.....	15
Save.....	16
Manual conventions.....	5
Overview	
Method of working.....	6
Method of working - overview.....	6
Restored files.....	15
Storage location of log file.....	15
Program	
Starting the program.....	6
Restore	
Overview.....	15
Save log file.....	16
Select files.....	13
Start over.....	16
Scan	
Deep scan.....	8
Fast scan.....	8
Start screen.....	8
Screen	
Files Found.....	10
Guide.....	8
Help.....	8
Process completed.....	15
Start screen.....	8
Select	
Criteria.....	13
Deep scan.....	9
Fast scan.....	9
Problem categories.....	13, 13
Scan level:.....	9
Select criteria.....	13
Select fast scan.....	9
Select problem categories.....	13
Select restore files.....	13
Select scan level:.....	9
Select storage medium.....	9
Specific files.....	13
Storage medium.....	9
Select specific files.....	13
Show specific files.....	13
Start	
Via Application Launcher.....	6
System requirements.....	6
Window	
Select specific files.....	11
Show only specific files.....	11

9 Contact

Nero RescueAgent is a Nero AG product.

Nero AG

Rueppurrer Str. 1a	Internet:	www.nero.com
76137 Karlsruhe	Help:	http://support.nero.com
Germany	Fax:	+49 721 6272 6499

Copyright © 2014 Nero AG and its licensors. All rights reserved.